

LÄGENHETSTABELL

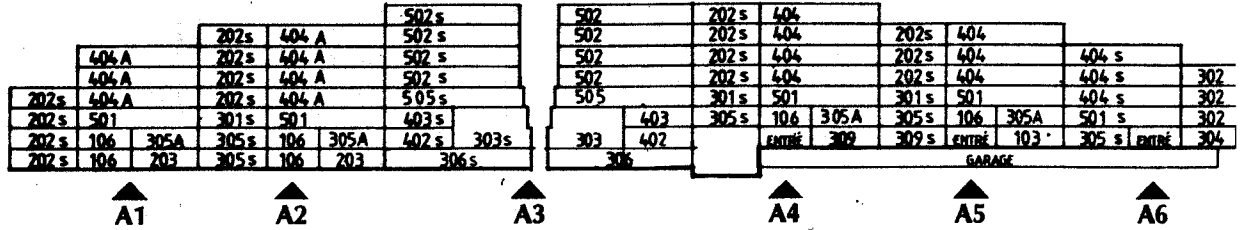
LGH-TYPER	ANTAL LGH	ANTAL RUM	LGH-YTA INKL FD	LGH-TYPEN FINNS I TRAPPHUS NR	LGH-TYPER	ANTAL LGH	ANTAL RUM	LGH-YTA INKL FD	LGH-TYPEN FINNS I TRAPPHUS NR
103	3	1 Rok	62,0 M2	A5, A11, A12	307	2	3 Rok	92,0 M2	A10
103 S	2	1 Rok	62,0 M2	A9, A10	307 S	2	3 Rok	92,0 M2	A11
106	19	1 Rok	35,0 M2	A1, A2, A4, A5, A9, A11, A12, B1, B3, B4, C2, C4	309	2	3 Rok	94,0 M2	A4, A9
106 S	1	1 Rok	35,0 M2	A10	309 S	2	3 Rok	94,0 M2	A5, A12
202	3	2 Rok	69,0 M2	A14	310	8	3 Rok	91,0 M2	HUS D
202 S	45	2 Rok	69,0 M2	A1, A2, A4, A5, A8, A9, A12, A13, B1, B3, B4, C1, C2, C4	310 S	7	3 Rok	91,0 M2	HUS D
203	2	2 Rok	72,0 M2	A1, A2	312	6	3 Rok	82,0 M2	B2, C3
204	8	2 Rok	65,5 M2	HUS D	312 S	6	3 Rok	85,0 M2	B2, C3
204 S	7	2 Rok	65,5 M2	HUS D	402	1	2½ Rok	110,0 M2	A3
207	6	2 Rokv	54,5 M2	B2, C3	402 S	1	2½ Rok	110,5 M2	A3
208	1	1½ Rok	53,5 M2	C2	403	1	2½ Rok	101,5 M2	A3
301	1	2½ Rok	77,5 M2	A7	403 S	1	2½ Rok	102,0 M2	A3
301 S	7	2½ Rok	77,5 M2	A2, A4, A5, A8, A9, A12, A13	404	26	3 Rok + 1 R SE	103,0 M2	A4, A5, A7, A8, A9, A11, A12, A13
302	7	2½ Rok	77,5 M2	A6, A10	404 S	10	3 Rok + 1 R SE	103,0 M2	A6, A10, A14
302 S	7	2½ Rok	77,5 M2	A7, A11	404 A	7	4 Rok	102,5 M2	A1, A2
303	1	2½ Rok E	94,0 M2	A3	405	15	3 Rok + 1 Rokv	115,0 M2	B1, B3, B4, C1, C2, C4
303 S	1	2½ Rok E	94,0 M2	A3	501	9	3 Rok + 1 Rok	118,0 M2	A1, A2, A4, A5, A8, A9, A11, A12, A13
304	2	3 Rok	85,0 M2	A6, A10	501 S	3	3 Rok + 1 Rok	118,0 M2	A6, A10, A14
304 S	2	3 Rok	85,0 M2	A7, A11	502	4	4½ Rok	111,5 M2	A3
305	2	3 Rok	86,0 M2	A8, A13	502 S	4	4½ Rok	112,0 M2	A3
305 S	10	3 Rok	86,0 M2	A2, A4, A5, A6, A8, A9, A12, A13, A14	503	4	4 Rok E	133,5 M2	B1, B3, B4, C4
305 A	7	3 Rok	90,0 M2	A1, A2, A4, A5, A9, A11, A12	504	2	5 Rok E	123,5 M2	B2, C3
305 AS	1	3 Rok	90,0 M2	A10	505	1	5 Rok	128,5 M2	A3
306	1	3 Rok	82,0 M2	A3	505 S	1	5 Rok	129,0 M2	A3
306 S	1	3 Rok	82,0 M2	A3	601	2	5 Rok E	138,0 M2	B2, C3
					601 S	5	5 Rok E	138,0 M2	B1, B2, B3, C3, C4

E = Etagelägenhet

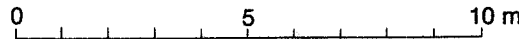
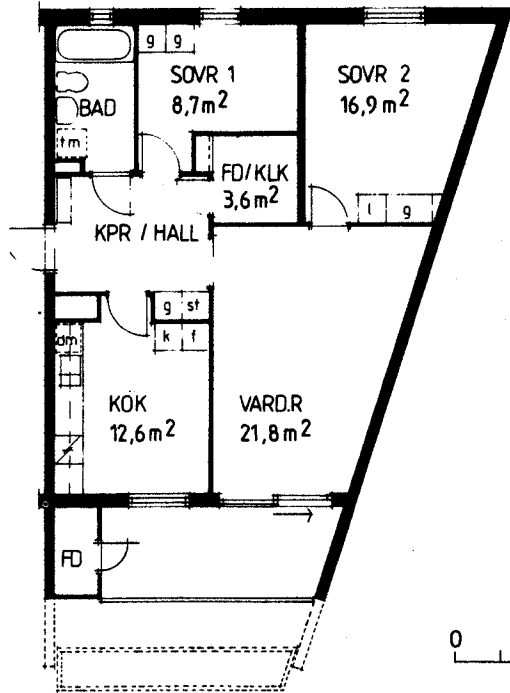
SE = Separat entré

sid IV

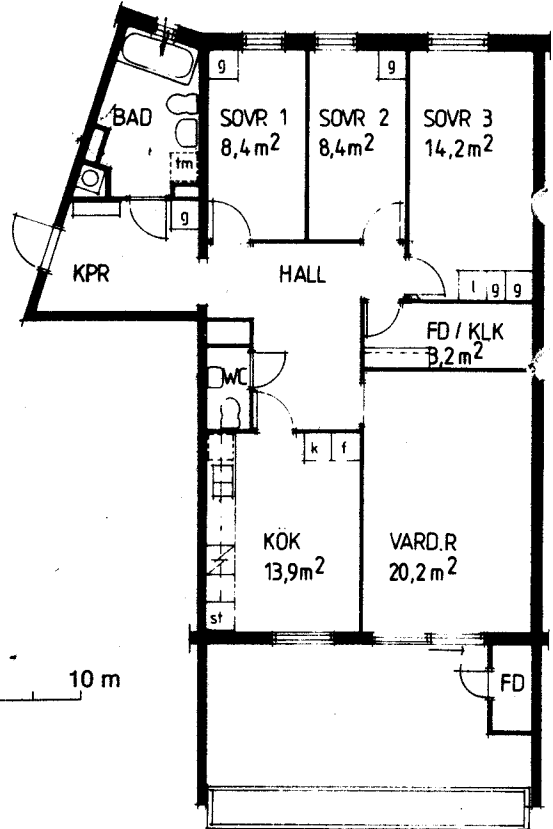
hus **A**



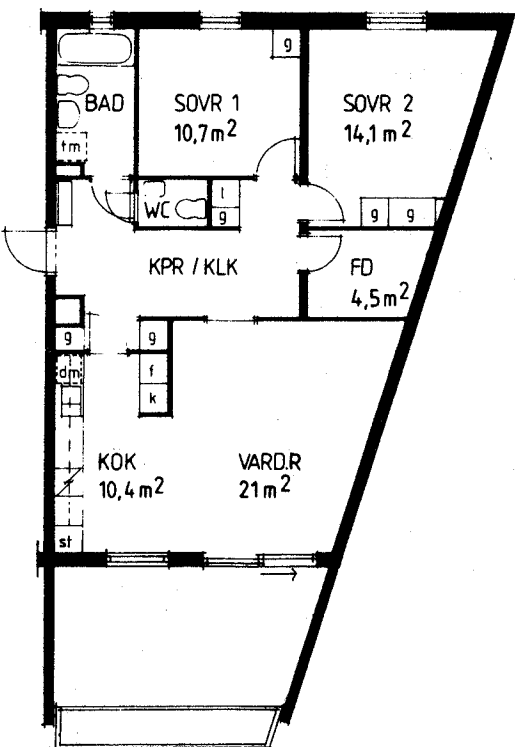
TYP 302 (302 s) 77,5 m²
2 1/2 RoK



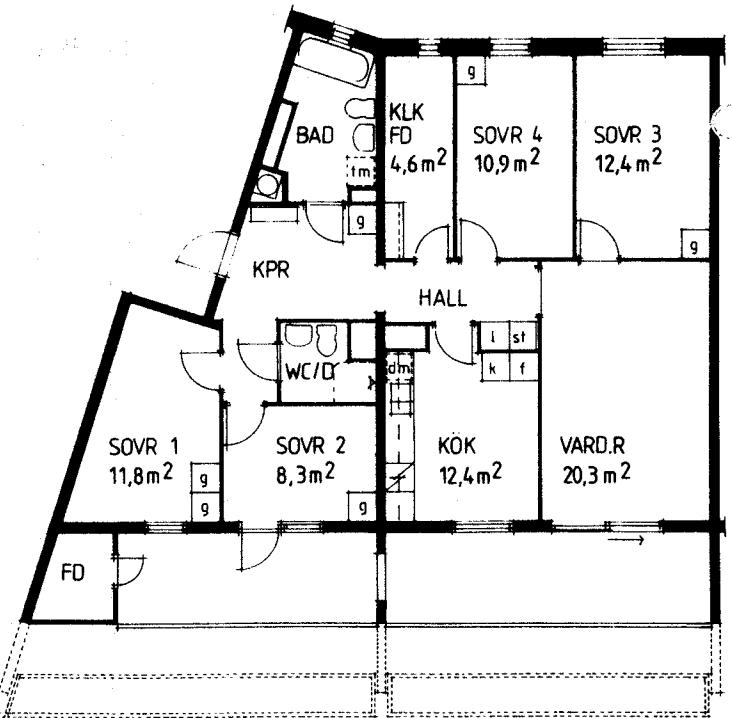
TYP 403 101,5 m²
2 2/2 RoK



TYP 304 (304 s) 85,0 m²
3 RoK



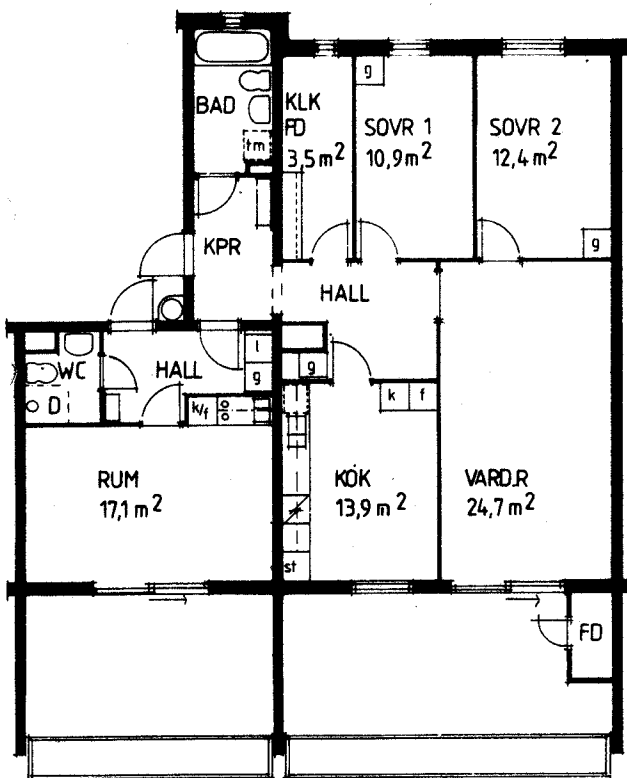
TYP 502 111,5 m²
4 1/2 RoK



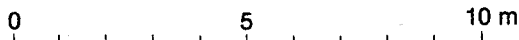
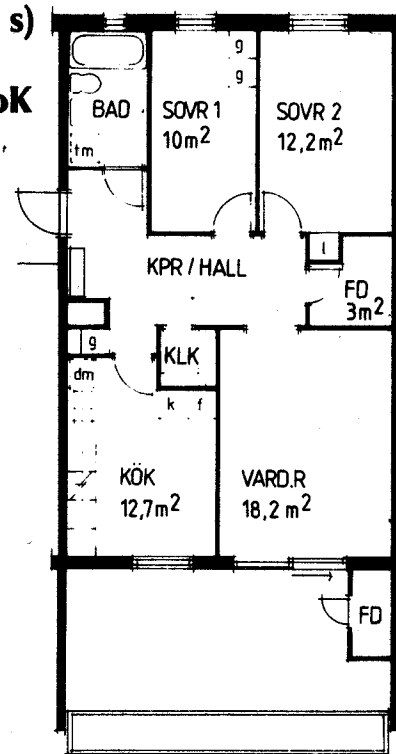
302s	404	202s	404	202s	404	404s	302
302s	404	202s	404	202s	404	404s	302
302s	404	202s	404	202s	404	404s	302
302s	404	202s	404	301s	501	501s	304
302s	404	301s	501	305s	106	305A s	106a
304s	ENTRÉ	301	305s	ENTRÉ	103s	ENTRÉ	309

302s	404	202s	404	202s	404	404s	302
302s	404	202s	404	202s	404	404s	302
302s	404	202s	404	202s	404	404s	302
304s	501	301s	501	202s	404	404s	202
307s	106	305A	106	305s	106	301s	501
307s	ENTRÉ	103	309s	ENTRÉ	103	305s	ENTRÉ

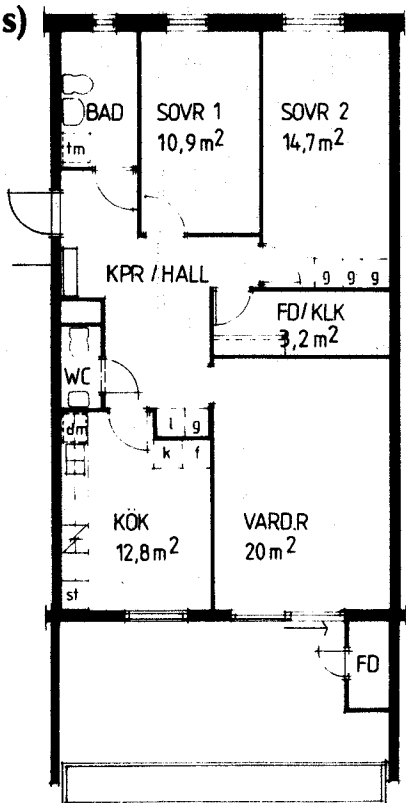
**TYP 501 (501 s) 118,0 m²
3 RoK + 1 RoKS**



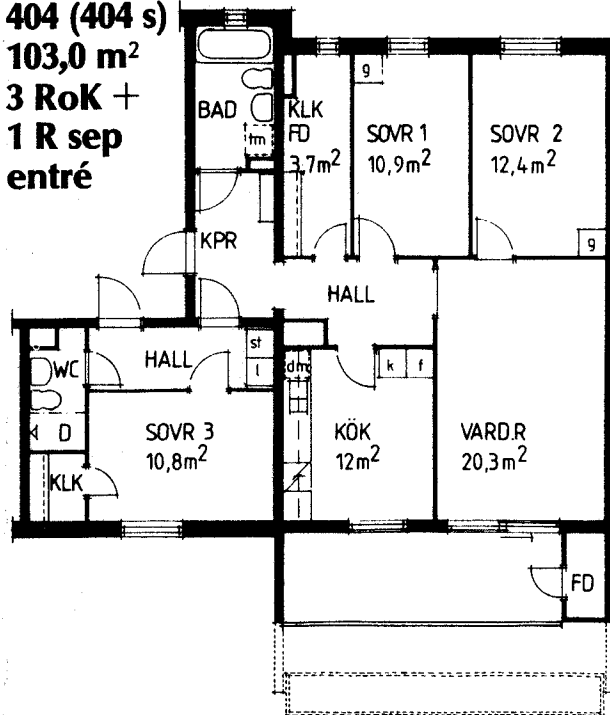
**TYP 301 (301 s) 77,5 m²
2 1/2 RoK**



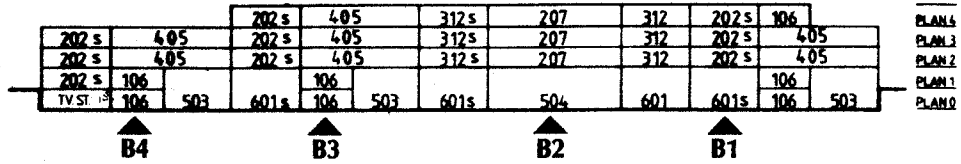
**TYP 305 (305 s) 86,0 m²
3 RoK**



**TYP 404 (404 s) 103,0 m²
3 RoK + 1 R sep
entré**

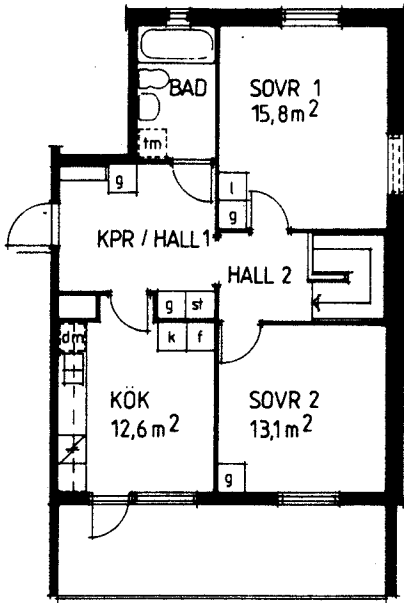


hus B

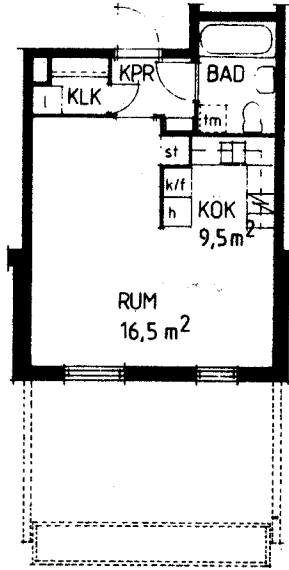


TYP 503
133,5 m²
4 RoK - etage

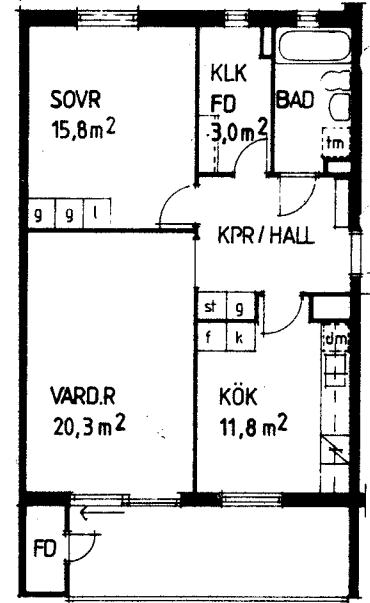
övre



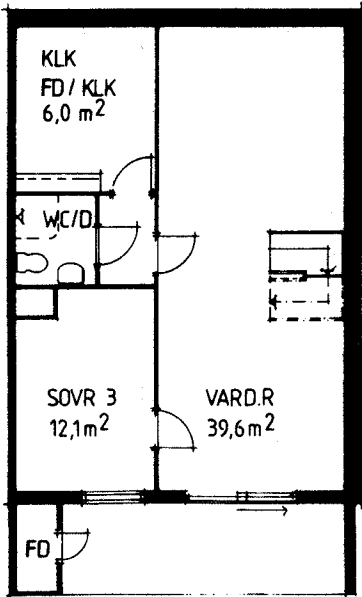
TYP 106 (106 s)
35,0 m²
1 RoK



TYP 202 (202 s)
69,0 m²
2 RoK

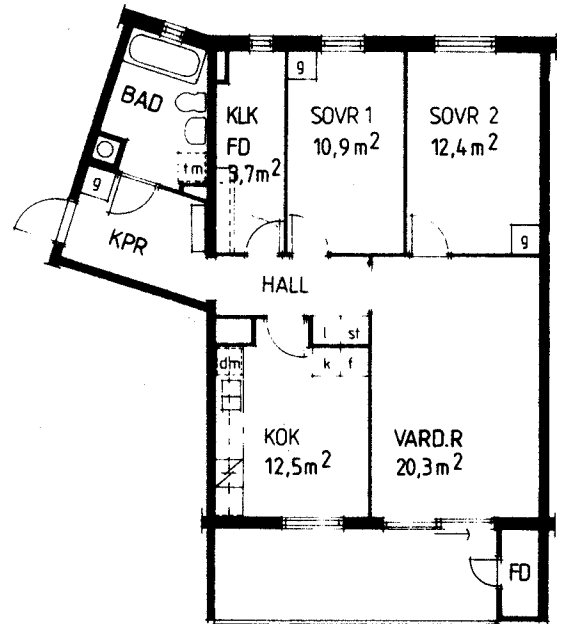


nedre



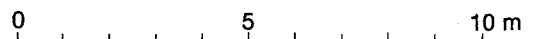
Teckenförklaring

- g** = GARDEROBSKÅP
- l** = LINNESKÅP
- h** = HÖGSKÅP
- st** = STÄDSKÅP
- k/f** = KOMB. KYL-FRYS
- k** = KYL
- f** = FRYS
- dm** = PLATS FÖR DISKMASKIN
- tm** = PLATS FÖR TVÄTTPELARE
- N** = SPIS
- o** = KOKSKÅP
- KLK = KLÄDKAMMARE
- FD = FÖRRÅD
- D = DUSCH



TYP 312
82,0 m²
3 RoK

Typ 501 = Lägenhetstyp
Typ 501 s = Spegelvänd

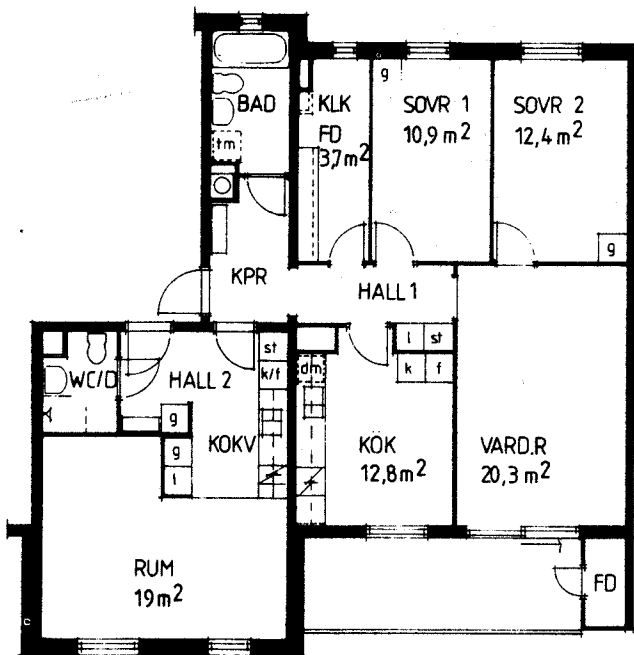


hus C

			312 s	207	312	202 s	405			
202 s	405		312 s	207	312	202 s	405	202 s	405	
202 s	405		312 s	207	312	202 s	405	202 s	405	
601 s	106	503	601 s	504	601	202 s	106	208	202 s	405
										TVÄTSTUGA

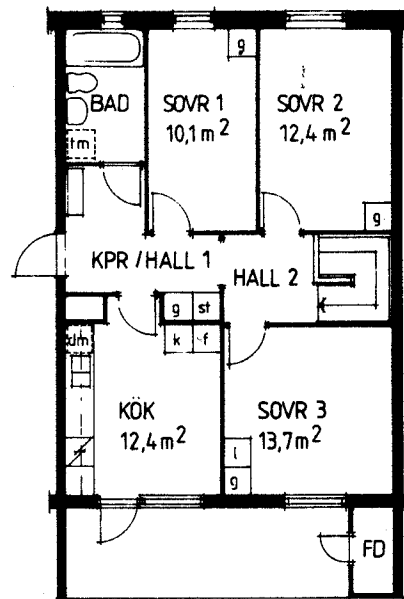
PLAN 4
PLAN 3
PLAN 2
PLAN 1
PLAN 0

TYP 405
115,0 m²
3 RoK + 1 RoKV

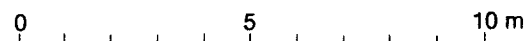
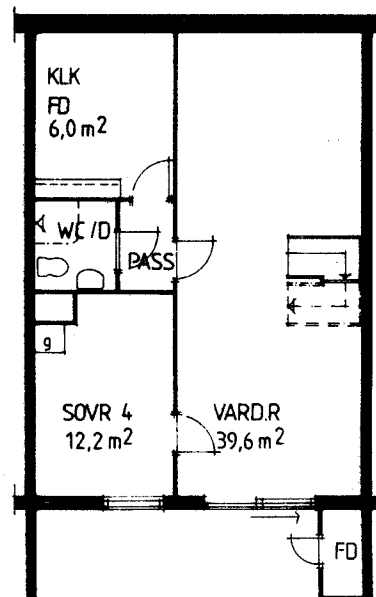


TYP 601 (601 s)
138,0 m²
5 RoK - etage

övre

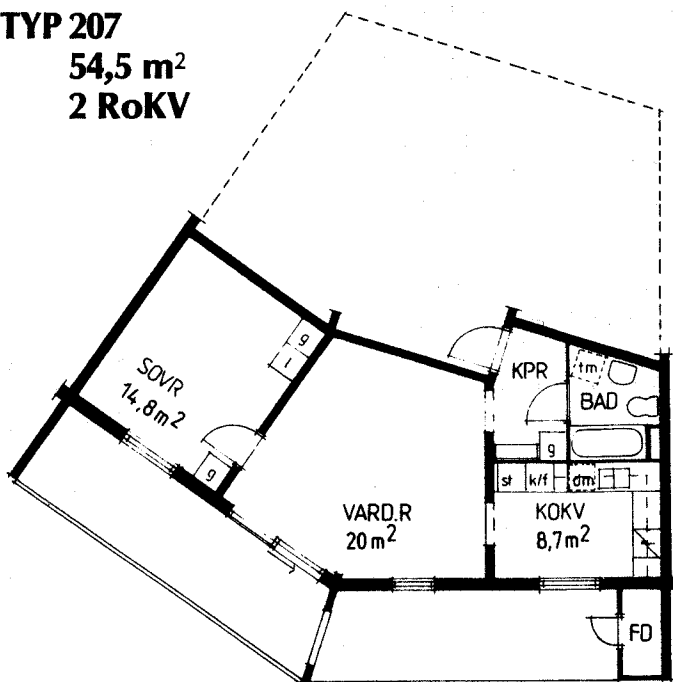


nedre



Rätt till ändringar förbehålles

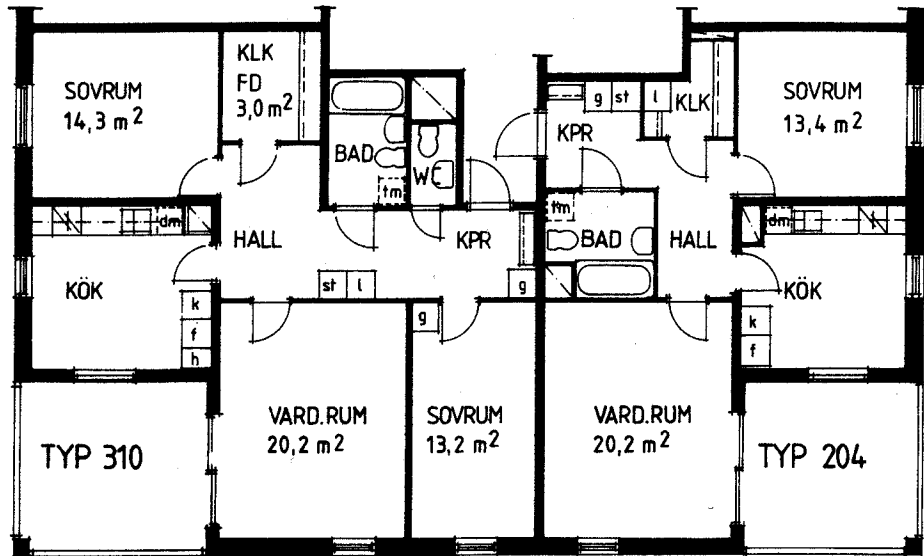
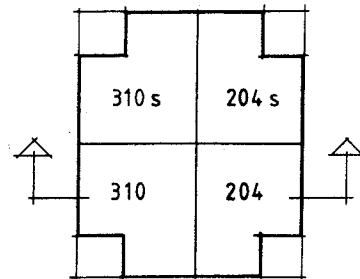
TYP 207
54,5 m²
2 RoKV



hus D

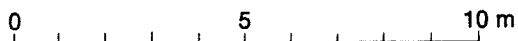
310 s	310	204	204
310 s	310	204	204 s
310 s	310	204	204 s
310 s	310	204	204 s
310 s	310	204	204 s
310 s	310	204	204 s
310 s	310	204	204 s
BÄRV. TVÄTT	310	204	FORVALTNING
LGH - FRD	LGH - FRD	CYK	CYKLAR
			LGH - FRD

PLAN 8
PLAN 7
PLAN 6
PLAN 5
PLAN 4
PLAN 3
PLAN 2
PLAN 1
PLAN 0



TYP 310 (310 s)
91,0 m²
3 RoK

TYP 204 (204 s)
65,5 m²
2 RoK



Kvarterslokal (Hus E)

